



# MS11

ADJUSTABLE RANGE, STAINLESS STEEL  
MICROWAVE TOUCHLESS ACTUATOR



## VIDEO



[Watch the product video](#)

## TECHNOLOGY



## CERTIFICATIONS



## DESCRIPTION

BEA's **MS11** is an aesthetically pleasing, touchless activation device designed to reduce the spread of germs and improve accessibility in healthcare, retail, industrial and commercial settings. The **MS11** has been purpose-built to withstand the extreme rigors of fast-paced and sanitary environments.

The flush-mount **MS11** is a durable stainless steel device utilizing adjustable-range microwave technology.

The **MS11's** illuminated center and audible signaling confirms activation and encourages proper touchless use.

The **MS11** detects moving objects such as a hand, cart or wheelchair and is designed for use in hospitals, pharmacies, clean rooms, food service and other areas needing highly accessible and germ-free activation.



## Ideal For Harsh Environments

IP65 rated enclosure capable of use in industrial and extreme wash-down environments

## High-Visibility

Illuminated blue center changes to green upon signal reception / activation

## Adjustable Detection Zone

Adjustable sensing zone from 2 – 24 inches (pulse or toggle)

## Activation Alerts

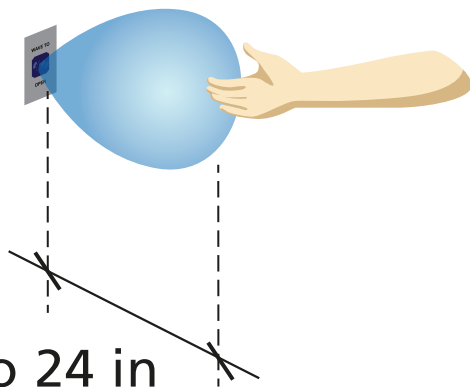
Adjustable audible alert setting, including silent-mode required for hospitals and other noise-sensitive environments

## Adjustable Hold Time

Configurable output hold time of 1 – 30 seconds allowing unique, user-defined device placement

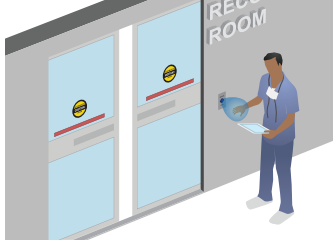
## Universally Compatible With Automatic Doors

Compatible with all automatic door control makes and models

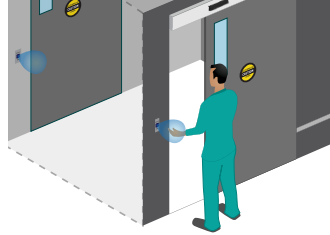


2 to 24 in

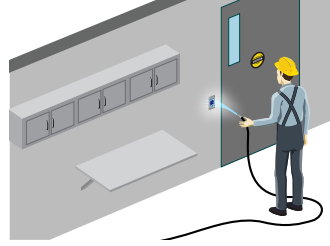
## APPLICATIONS



Healthcare Environments



Clean Rooms and Sterile Facilities



Washdown Resistant

## TECHNICAL SPECIFICATIONS

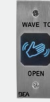
|                            |  |
|----------------------------|--|
| <b>Technology</b>          | Microwave Doppler Radar                              |
| <b>Detection Mode</b>      | Motion (bidirectional), Toggle or Timed Mode         |
| <b>Sensing Zone **</b>     | 2 – 24" (adjustable)                                 |
| <b>Hold Time</b>           | 1 – 30 s   |
| <b>Alert Settings</b>      |  |
| Audible Alert              | Silent Mode or Signal Mode                           |
| Visual Alert               | Blue (Standby) Green (Activation)                    |
| <b>Supply Voltage</b>      | 12 – 24 VAC / VDC or 5 VDC                           |
| <b>Current Consumption</b> | < 2.8 W  |
| <b>Temperature Range</b>   | -22 – 158 °F   |
| <b>Enclosure Rating</b>    | IP65   |
| <b>Relay</b>               | 1-Form C Solid State Relay<br>1 A 30 VAC / VDC (max) |
| <b>Dimensions</b>          |  |
| Single Gang                | 4.5" (H) × 2.75" (W) × 0.98" (T)                     |
| Double Gang                | 4.5" (H) × 4.5" (W) × 0.98" (T)                      |
| Jamb                       | 4.5" (H) × 1.68" (W) × 0.98" (T)                     |
| <b>Wire Harness Length</b> | 12"  |
| <b>Material</b>            | Stainless Steel (faceplate) / ABS (center)           |

\*\* See User's Guide

## PRODUCT SERIES



**10MS11S**  
Stainless steel single gang



**10MS11J**  
Stainless steel jamb style



**10MS11D**  
Stainless steel double gang



**10RD900**  
900 MHz Receiver



**10TD900TR**  
900 MHz retrofit transmitter



**10ABOXSGSMS**  
Single gang angled mounting box

**EXENCIÓN DE RESPONSABILIDAD** La información se proporciona con la condición de que las personas que la reciban tomarán su propia determinación en cuanto a su idoneidad para sus fines antes de su uso. En ningún caso BEA será responsable por daños de cualquier naturaleza que resulten del uso o la dependencia de la información de este documento o de los productos a los que se refiere la información. BEA tiene el derecho sin responsabilidad de cambiar las descripciones y especificaciones en cualquier momento.

[WWW.BEASENSORS.COM](http://WWW.BEASENSORS.COM)



BEA AMERICAS / RIDC Park West / 100 Enterprise Drive / Pittsburgh, PA  
T 1-800-523-2462 / F 1-888-523-2462 / E info-us@BEAsensors.com

A Halma company