



## MS08

ADJUSTABLE RANGE MICROWAVE  
TOUCHLESS ACTUATOR



### VIDEO



[Watch the product video](#)

### TECHNOLOGY



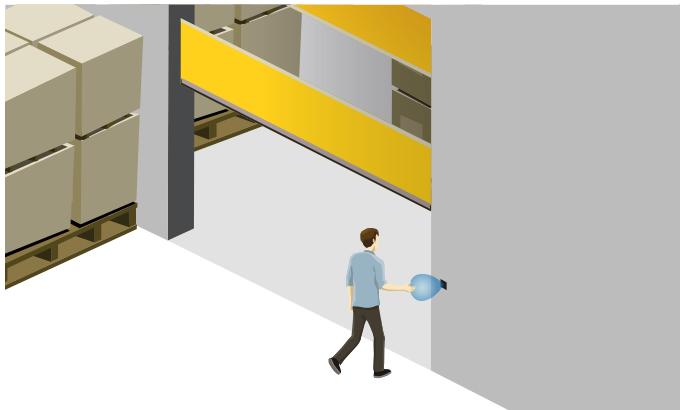
### CERTIFICATIONS



### DESCRIPTION

BEA's **MS08** utilizes proven microwave motion technology to ensure consistent, dependable touchless activation and can be adjusted to comply with the ANSI 156.10 knowing act standard.

The **MS08** detects moving objects such as a hand, cart or wheelchair and is ideal for use in hospitals, pharmacies, clean rooms, food service facilities and other applications requiring a hygienic activation method.



### Adjustable Detection Zone

Detection zone from 4 – 24 inches (pulse or toggle)

### Silent Activation

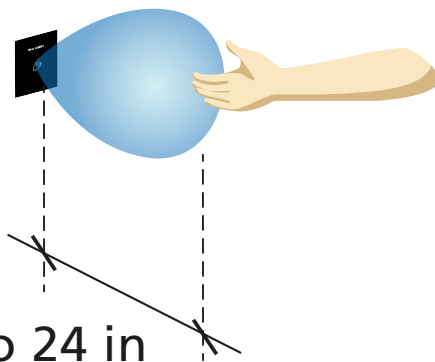
Silent activation for hospitals and other noise-sensitive environments

### Low Profile Design

Low profile, beveled design reduces chance of accidental damage in high traffic areas

### Various Faceplates Available

Available in white, black or cream faceplate; options for single double gang boxes



4 to 24 in

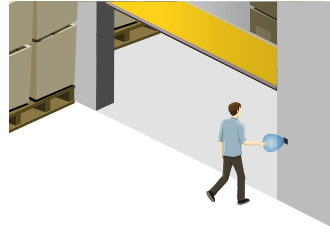
## APPLICATIONS



Dual Egress



Sliding Doors



Industrial Doors



Swing Doors



## TECHNICAL SPECIFICATIONS

<b>Technology</b>	Microwave Doppler Radar
Radiated Frequency	24.125 GHz
Radiated Power Density	< 5 mW / cm <sup>2</sup>
<b>Detection Mode</b>	Motion (bidirectional)
<b>Detection Range</b>	4 – 24" (adjustable)
<b>Output</b>	Relay with switch-over contact (voltage free)
Max. Contact Voltage	60 VDC / 125 VAC
Max. Contact Current	1 A (resistive)
Max. Switching Power	30 W (DC) / 60 VA (AC)
<b>Output Hold Time</b>	0.5 s (in pulsed mode)
<b>Supply Frequency</b>	50 – 60 Hz
<b>Supply Voltage</b>	12 – 24 VAC ±10% 12 – 24 VDC 30% / -10%
<b>Power Consumption</b>	< 1.5 W
<b>Material</b>	ASA, Nylon, PC
<b>Cable Type</b>	Standard cable up to 16 AWG - 1.5 mm <sup>2</sup>
<b>Temperature Range</b>	-4 – 131 °F (-20 – 55 °C)
<b>Norm Conformance</b>	EMC: 2004 / 108 / EC FCC: G9B-MS08 IC: 4680A-MS08

## PRODUCT SERIES



**10MS08U**  
Single & Double gang  
faceplates



**10RD900**  
900 MHz Receiver



**10TD900TR**  
900 MHz retrofit  
transmitter

<b>70.5226</b>	Single gang black with text
<b>70.5227</b>	Double gang black with text
<b>70.5272</b>	Single gang solid black
<b>70.5273</b>	Double gang solid black
<b>70.5278</b>	Single gang black with logo
<b>70.5279</b>	Double gang black with logo
<b>70.5268</b>	Single gang white with text
<b>70.5269</b>	Double gang white with text
<b>70.5274</b>	Single gang solid white
<b>70.5275</b>	Double gang solid white
<b>70.5270</b>	Single gang cream with text
<b>70.5271</b>	Double gang cream with text
<b>70.5276</b>	Single gang solid cream
<b>70.5277</b>	Double gang solid cream
<b>MS08U CUSTOM</b>	10MS08U plus choice of any one of the additional faceplates

**EXENCIÓN DE RESPONSABILIDAD** La información se proporciona con la condición de que las personas que la reciban tomarán su propia determinación en cuanto a su idoneidad para sus fines antes de su uso. En ningún caso BEA será responsable por daños de cualquier naturaleza que resulten del uso o la dependencia de la información de este documento o de los productos a los que se refiere la información. BEA tiene el derecho sin responsabilidad de cambiar las descripciones y especificaciones en cualquier momento.

[WWW.BEASENSORS.COM](http://WWW.BEASENSORS.COM)



BEA AMERICAS / RIDC Park West / 100 Enterprise Drive / Pittsburgh, PA  
T 1-800-523-2462 / F 1-888-523-2462 / E info-us@BEAsensors.com

A Halma company